

# Willemsteins Industriële Ondernemingen B.V.

Schelluinsestraat 41, Gorinchem, 4203 NK, Netherlands

has been assessed and certified as meeting the requirements of the standard

## PEFC - Chain of Custody

PEFC ST 2002:2013 – "Chain of Custody of Forest Based Products – Requirements" - dated 24/05/2013  
PEFC ST 2001:2008, Second Edition – "PEFC Logo Usage Rules – Requirements" – dated 26/11/2010  
as amended and published on [www.pefc.org](http://www.pefc.org)

This certification includes the following products

**Purchase of hard- and softwood timber, timber products and board material (PEFC certified and other material), (outsourced) moulding and processing; production of wardrobes and sales of hard- and softwood timber, timber products, board material and wardrobes (PEFC certified) using the physical separation and percentage method.**

**Inkoop van hard- en zacht hout, houten producten, plaatmateriaal (PEFC gecertificeerd en ander materiaal), (uitbestede) bewerking, productie van inbouwkasten, verkoop van hard- en zacht hout, houten producten, plaatmateriaal (PEFC gecertificeerd) gebruik makend van de fysieke scheidingsysteem en percentage systeem.**

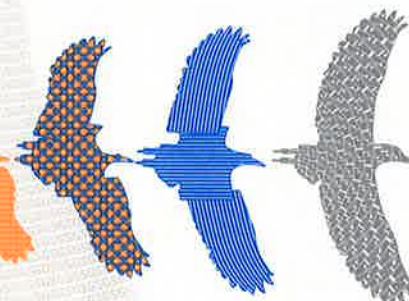
This certificate is valid from 26 January 2015 until 29 January 2019 and remains valid subject to satisfactory surveillance audits  
Recertification audit due before 29 October 2018  
Issue 5. Certified since 21/03/2012

This is a multi-site certification  
Additional site details are listed on subsequent pages

Authorised by

**SGS** Société Générale de Surveillance SA - Systems & Services Certification  
Technoparkstrasse 1, 8005 Zurich, Switzerland  
T +41 (0)44 445 16 80 F +41 (0)44 445 16 88 [www.ch.sgs.com](http://www.ch.sgs.com)

Organisations with a valid PEFC chain of custody certificate can only use the PEFC Logo with unique PEFC license logo number based on PEFC Logo usage license contract issued by the PEFC Council or in accordance with the PEFC logo usage rules.  
This document is issued by the Company subject to its General Conditions of Certification Services accessible at [www.sgs.com/terms\\_and\\_conditions.htm](http://www.sgs.com/terms_and_conditions.htm). Attention is drawn to the limitations of liability, indemnification and jurisdictional issues established therein. The authenticity of this document may be verified at <http://www.sgs.com/en/Our-Company/Certified-Client-Directories/Certified-Client-Directories.aspx>. Any unauthorized alteration, forgery or falsification of the content or appearance of this document is unlawful and offenders may be prosecuted to the fullest extent of the law.



**Willemsteins Industriële  
Ondernemingen B.V.**

**PEFC - Chain of Custody**



Issue 5

This certification includes the following products

**Purchase of hard- and softwood timber, timber products and board material (PEFC certified and other material), (outsourced) moulding and processing; production of wardrobes and sales of hard- and softwood timber, timber products, board material and wardrobes (PEFC certified) using the physical separation and percentage method.**

**Inkoop van hard- en zacht hout, houten producten, plaatmateriaal (PEFC gecertificeerd en ander materiaal), (uitbestede) bewerking, productie van inbouwkasten, verkoop van hard- en zacht hout, houten producten, plaatmateriaal (PEFC gecertificeerd) gebruik makend van de fysieke scheidingsysteem en percentage systeem.**



Additional facilities

**JéWé B.V. Houtwarenfabriek, Schelluinsestraat 15, 4203 NJ Gorinchem**

**JéWéRET Verkoopmaatschappij B.V., Schelluinsestraat 41, 4203 NL Gorinchem**

**JéWéRET Verkoopmaatschappij B.V., Arkelsedijk 38, 4206 AC Gorinchem**

